

Openpath 16 I/O Elevator Board

16 Relay Module

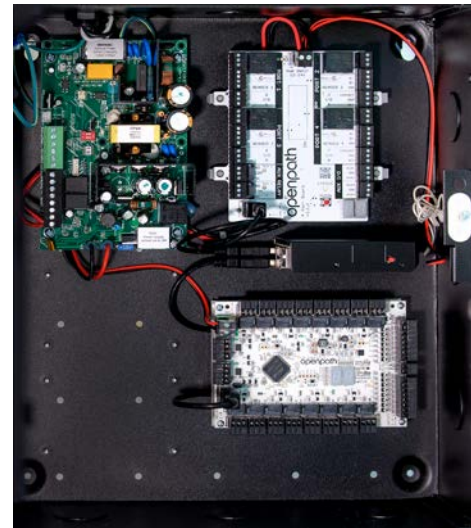
The Openpath 16 I/O Elevator Board extends access control capabilities to standard elevators, enabling building owners and tenants alike to secure and control access to specific floors. The Elevator Board is an optional expansion board for the Openpath Smart Hub that supports up to 16 floors and two Openpath Smart Readers. One Smart Hub can support up to three Elevator Boards, which are easily identified via seven-segment displays. Now, elevators can enjoy the same frictionless access with the use of Openpath Smart Readers and mobile credentials.

Also offered in the following Smart Hubs:

- Core Series Smart Hub with 24VDC Power Supply and Elevator Expansion Board
20ENT-SYS-24V
- Controller with 12/24VDC Power Supply and Elevator Expansion Board
OP-20ESH-24V

Features

- Connects to the Openpath Smart Hub via USB—a Smart Hub can support up to three Elevator Boards.
- Uses industry standard RS-485 signaling to communicate with Openpath Readers over traditional Wiegand wiring
- Includes port interfaces for 2 Openpath Readers, 16 relays, and 16 general purpose inputs
- Supports up to 16 floors total that can be split into multiple elevators (e.g. two elevators with 8 floors each)
- Seven-segment display for easy identification
- Small size fits easily as an add-on to an existing Smart Hub
- Ships with backplate for mounting in Smart Hub enclosure
- Lifetime Warranty



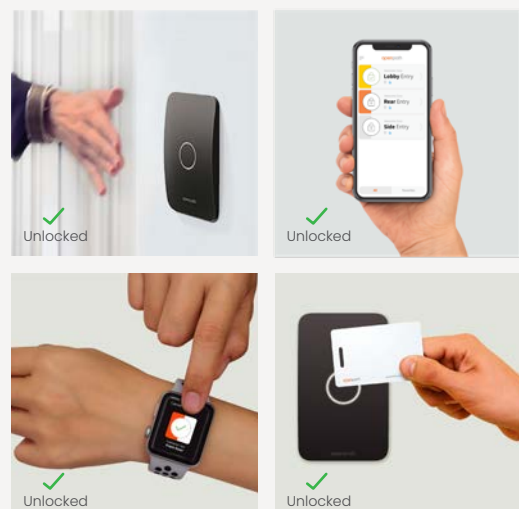
Specifications

- Operating Voltage: 12-24VDC
- Operating Current:
 - 12V: 825mA Max (with 2 Openpath Readers)
 - 12V: 325mA Max (with no readers)
 - 24V: 470mA Max (with 2 Openpath Readers)
 - 24V: 190mA Max (with no readers)
- Relays: 16 relays, 60VDC Max
24VDC, 1A (resistive)
125VAC, 0.5A (resistive)
- Openpath Readers: Up to 2 Openpath Readers
- General Purpose Inputs: 16, 3V-24VDC
- Size: Approx 5.25 x 3.5 in (13.34 x 9.04 cm)
- Operating Temperature: 32° to 122°F (0° to 50°C)
- Operating Humidity: 5% to 85% relative, non-condensing
- Communication Ports: USB port
- Compliance: FCC, UL 294, CE

Openpath Access

Openpath creates smart security solutions for the modern office. The company's flagship product, Openpath Access, combines sleek hardware with an app, enabling employees to enter the office using their smartphone. Unlike legacy systems, Openpath's software is cloud-based, meaning Access easily scales with your business and seamlessly integrates with platforms like G Suite and Azure AD.

Openpath's patented SurePath Mobile technology ensures reliability and quick entry via Bluetooth, Wi-Fi and LTE. With encryption at every level and powerful, user-level permissions, Openpath Access is both more secure and more dynamic than traditional access control systems. Openpath Access' streamlined, customizable features make office management easier than ever.



OP-16EM
Elevator Expansion Board

